

Business Intelligence in the Cloud for Oracle JD Edwards

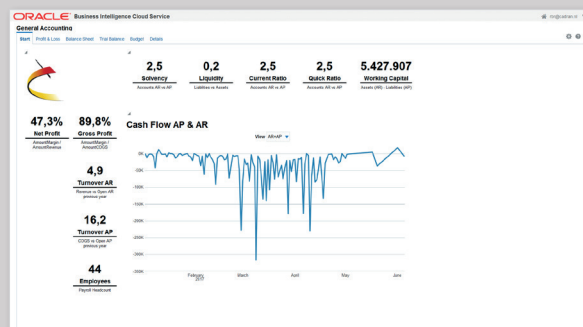
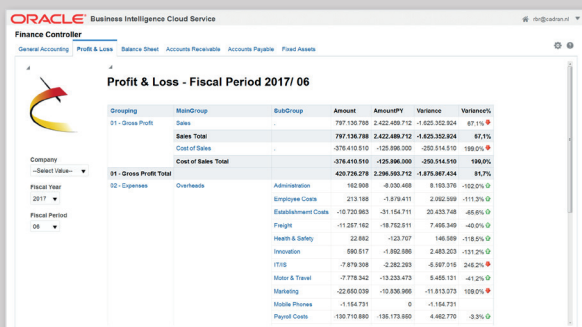
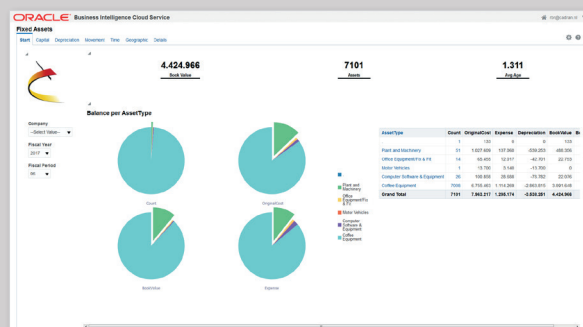
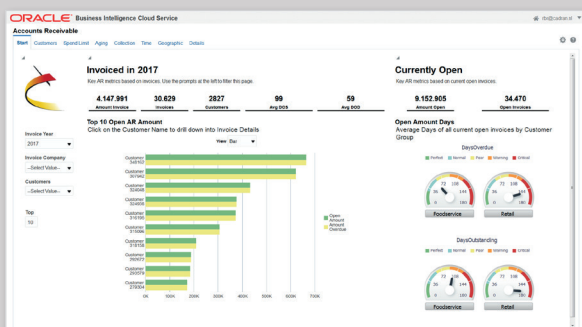


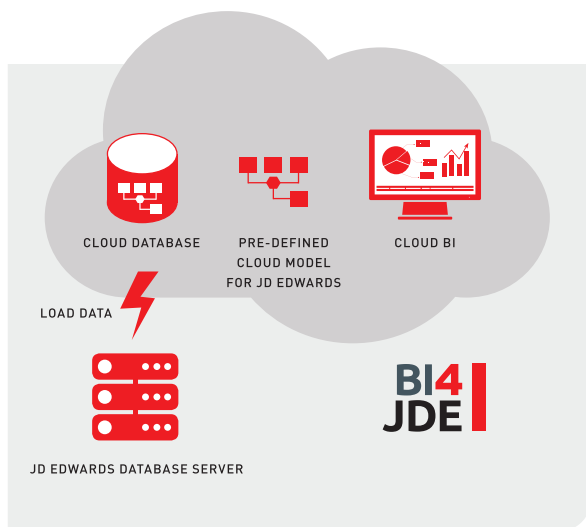
Do you easily retrieve your information from your JD Edwards ERP system? With BI4JDE, the simple Plug & Play BI solution for Oracle JD Edwards, we offer you one single Cloud platform for all your reporting & analytics needs.

Organizations today are struggling to obtain business-changing information from their multiple data sources. Accessing and consolidating this data is complex and time-consuming. By using our Plug & Play BI solution BI4JDE, your BI environment will be up and running in weeks. Available whenever and wherever you need it, with just one version of the truth!

Key Benefits:

- ✓ Fully integrated with Oracle JD Edwards
- ✓ Reliable and real-time data
- ✓ For end users
- ✓ Cloud based
- ✓ Standard reports and dashboards
- ✓ Mobile supported
- ✓ Price / user / month





Easy BI in the Cloud

BI4JDE is based on Oracle BI Cloud Service (BICS) providing you easy, affordable analytics in the cloud; so you can convert data into insight as fast as you can click. It includes interactive dashboards, ad-hoc queries, mobile analyses and reports to better manage your organization. The Oracle Cloud means infrastructure, maintenance, and upgrades are handled. This enterprise-class solution delivered with reliability and simplicity helps reduce the burden on IT while streamlining your operations so that you can focus on your business.

Standard reports & dashboards

BI4JDE provides many standard reports & dashboards for all JD Edwards modules, such as:

- Finance
- Logistics
- Manufacturing
- Sales
- Service

Seamless integration with Oracle JD Edwards

As a JD Edwards user, you can profit immediately from BI4JDE because of the seamless integration we built. Part of this integration is Extract Transformation Load (ETL) and data modelling. 'Facts', 'Dimensions' and 'Views' are defined to obtain meaningful information for reports, analyses and dashboards. By taking away this complexity we leave you more time to define your reporting and dashboards needs.

BI4JDE entails:

- Seamless integration with JDE modules (GL, AR, AP, Sales, Revenue, Forecasting, Procurement, Inventory, Manufacturing and Service Management)
- Star Schemas
- Generic Dimensions (Time, Product, Company, etc.)
- Hierarchies
- Base and derived facts (Revenue, Cost of Goods Sold, Margins, etc.)
- Data is extracted from JD Edwards (on premise or hosted) and stored in a datawarehouse in the Cloud

Security & Governance

BI4JDE offers a solid security model, based on your JD Edwards security. This highest-standard security means you can be confident people access exactly what they need. Cadran has extensive experience with defining and implementing security models ensuring internal and external compliancy.

International support

Cadran Consultancy is one of the founders of **Redfaire International**, a global working Oracle JD Edwards partner. Redfaire International is specialized in ERP implementations, upgrades, localizations and support and has a team of over 530 and a presence in 18 countries. Redfaire International provides worldwide support for BI4JDE.

BI4JDE is distributed and supported by

